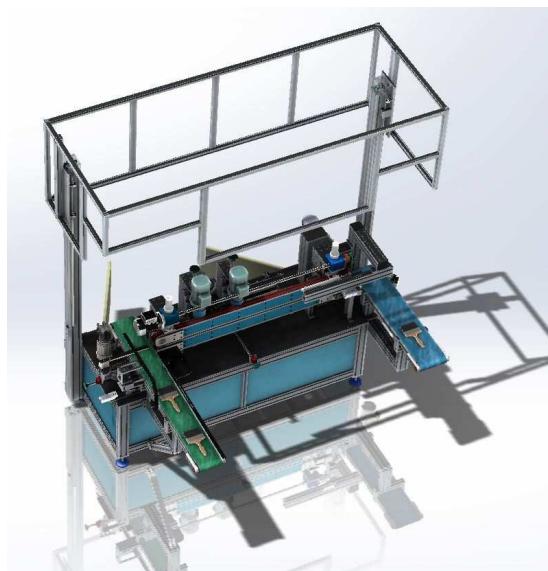


## IVM 9L – TRIMMING MACHINE

### Position n° 10



Straps transport system with speed regulation through inverter. Trimmers with blades .One trim head is fix and the other one is tracking system with brushless motor.

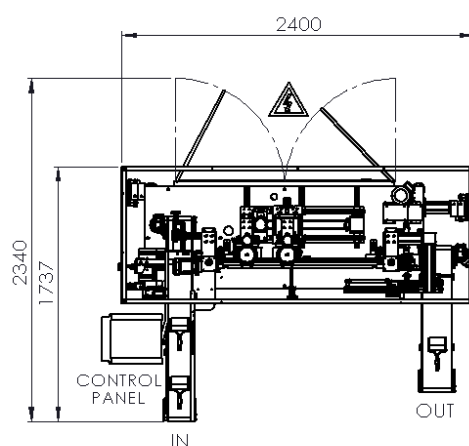
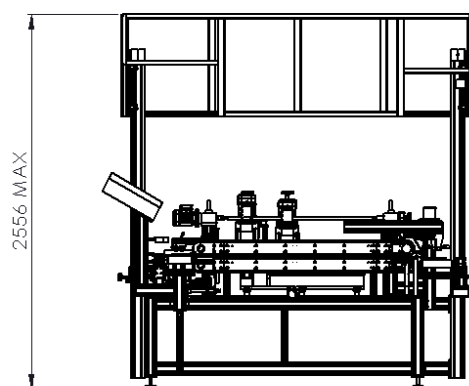
Blade speed can be set via inverter and the machine can be managed through touch screen.

Suction system available upon request.

Hourly productivity 1500 pieces and remote assistance available

### TECHNICAL DATA

Dimensions	2400x1750x2560
Weight	830 Kg
Operating voltage	380 V/ 50 Hz
Electrical consumption	8.10 A
Power absorbed	2.68 Kw
Single power cable (Not in assembly line)	5G2.5
Working pressure	6 Bar
Maximum pneumatic consumption	350 L/min
Working temperature	Min. 5°C Max. 40°C.
Humidity	Min. 8%, Max. 80%.
Noisiness	>80Db



**MACHINE COMPONENTS**

1	Loading belt	1
2	Load manipulator	1
3	Transport belts	1
4	Trimmers	2
5	Unload manipulator	1
6	Unloading belt	1

